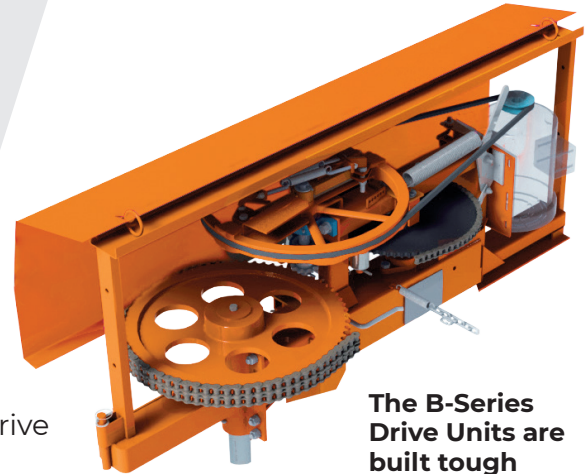


# The largest selection of barn cleaner equipment to suit every need.

- ✓ Self tightening motor mount
- ✓ Winch type chain tensioner
- ✓ Automatic reset clutch
- ✓ Standard model for chains up to 350 ft (107 m)
- ✓ HD model with massive double-80 final drive chain for jobs up to 700 ft (213 m)



The B-Series Drive Units are built tough

## CHAINS THAT HANDLE BIG LOADS

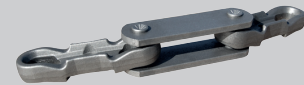
Our factory in Canada produces five models of top quality chain at great prices.



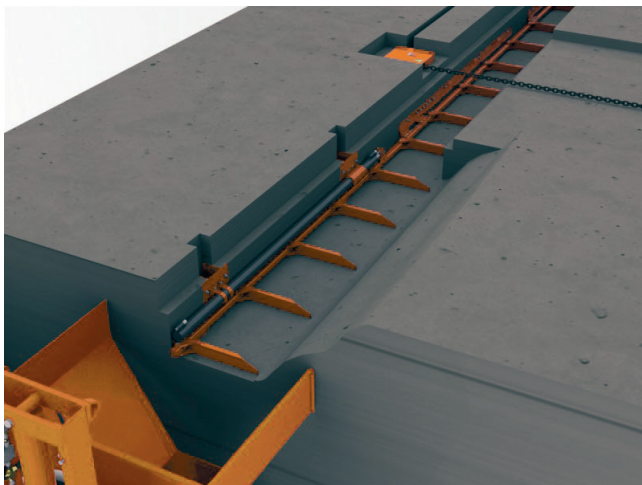
The fully-forged and extra-thick hook-link chain is the perfect replacement



7/8 logging pre-stretched and tested



Brutus: easy do-it-yourself installation



## The Shuttle-Stroke Hydraulic Cleaner fits everywhere.

### IDEAL FOR:

- Single-gutter layouts
- To run multiple systems from a single hydraulic unit